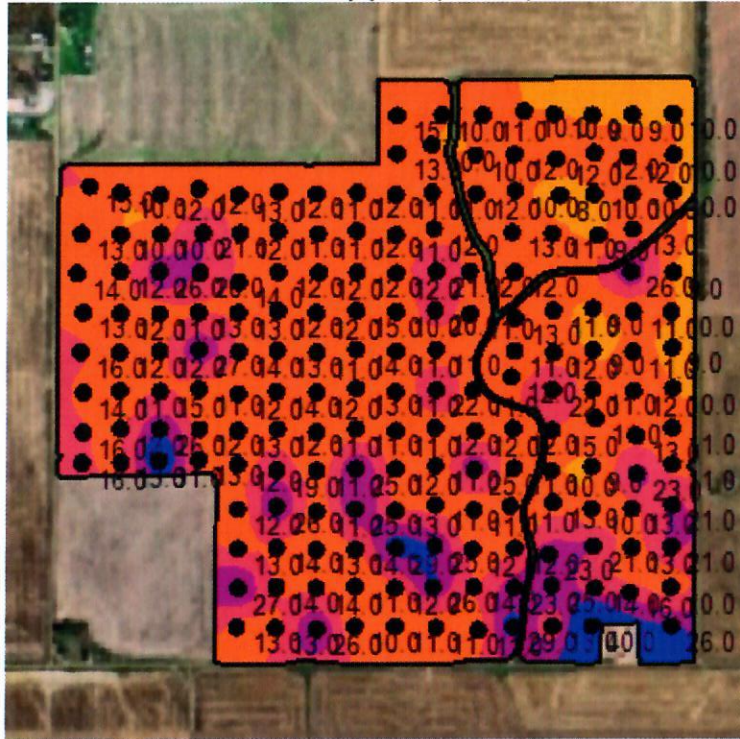
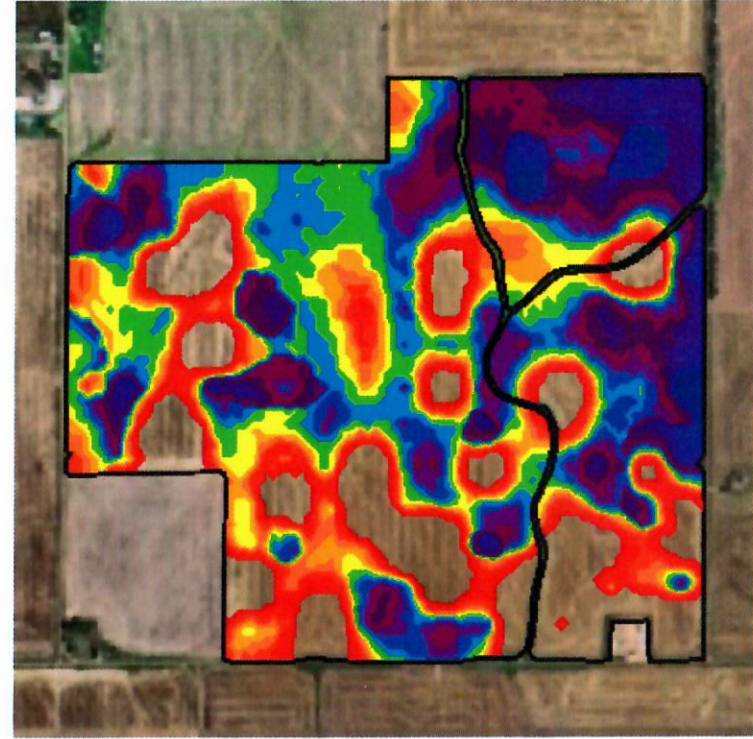


Sulfur - ppm (2016)



Sulfur Product Recommendation (2016)



Grower: Bob Schrock
 Farm: CattleCo Inc
 Field: State Line
 Area: 498.19 ac

Event Date(s): 6/29/2016
 Season: 2016
 Min: 8.08 ppm
 Avg: 13.97 ppm
 Max: 39.68 ppm

Season: 2016
 Min Rate: 1.00 lb/ac
 Avg Rate: 8.69 lb/ac
 Max Rate: 19.00 lb/ac
 Total Product: 3,446.79 lb
 Applied Area: 396.80 ac
 Product: Sulfur
 Credit: -

Order Id: 553422
 Order Task Id: 14982952
 Crop - Year 1: Wheat
 Purpose - Year 1: Dry Grain
 Yield Goal - Year 1: 65
 Task: KSU Recs - S Rec

Field Boundary	
Sulfur Surface ppm	
Very Low 0 - 5 ppm (0.0 ac) (0.0 %)	
Low 5 - 10 ppm (34.3 ac) (6.9 %)	
Medium 10 - 15 ppm (329.6 ac) (66.2 %)	
Optimum 15 - 20 ppm (86.0 ac) (17.3 %)	
High 20 - 25 ppm (36.8 ac) (7.4 %)	
Very High > 25 ppm (11.4 ac) (2.3 %)	

Field Boundary	
Sulfur Product Recommendation lb/ac	
1 - 3 (39.5 ac) (7.9 %)	
4 - 6 (76.0 ac) (15.3 %)	
7 (36.1 ac) (7.2 %)	
8 (46.1 ac) (9.3 %)	
9 (41.5 ac) (8.3 %)	
10 (31.9 ac) (6.4 %)	
11 - 13 (82.3 ac) (16.5 %)	
14 - 19 (43.4 ac) (8.7 %)	